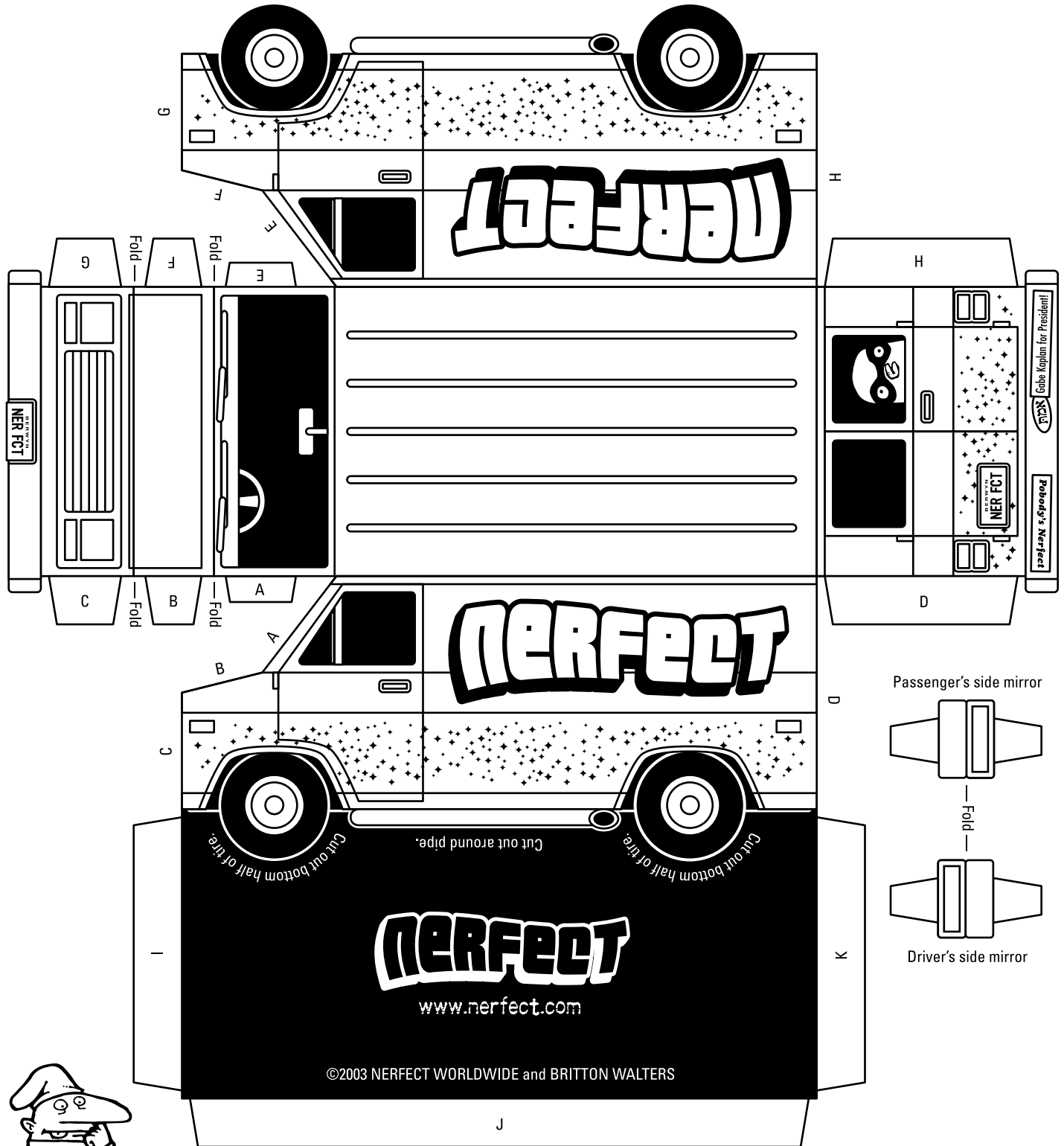


Nerfect Cut Out & Fold Van Model

Here is a vantastic paper model for you to cut out, fold up, glue, and enjoy from your pals at Nerfect Worldwide.



Tools we recommend to assemble this model

- X-ACTO® knife with fresh, sharp blades
- Self-healing cutting mat
- Metal straight edge
- Glue stick and/or transparent tape
- Hands of a surgeon and really nimble fingers

Putting this model van together

This model requires a bit of skill to assemble, but is well worth the effort. First, cut out the model. Next, cut out the bottom half of the labeled tires and pipe. If you want to add the mirrors, cut slits in the door windows where marked with white lines. Then, fold the tabs and sides of the van. Next, apply glue to the tabs and seal the model together, ending with the bottom of the van. Finally, slide the mirrors into the slits into the windows.